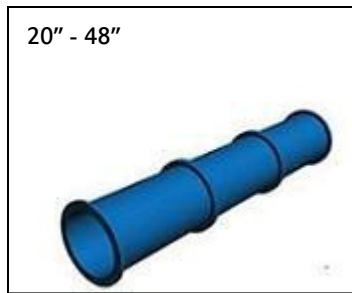
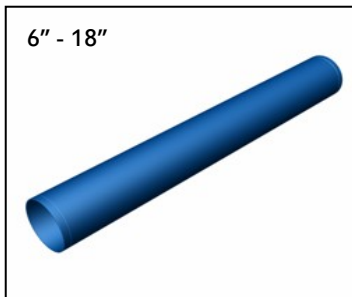


# THE BLUE DUCT™

## FLANGED PRODUCT SHEET

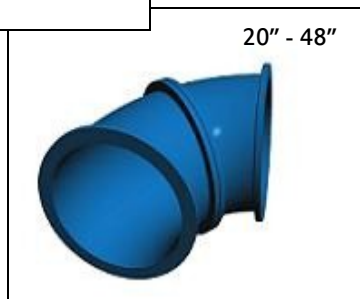
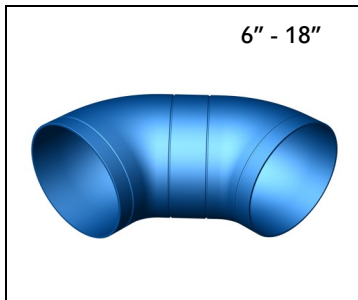


PIPE	
ITEM#	SIZE
06-2510	6"x 8'
06-2512	6"x 4'
08-2510	8"x 8'
08-2512	8"x 4'
10-2510	10"x 8'
10-2512	10"x 4'
12-2510	12"x 8'
12-2512	12"x 4'
14-2510	14"x 8'
14-2512	14"x 4'
16-2510	16"x 8'
16-2512	16"x 4'
18-2510	18"x 8'
18-2512	18"x 4'
20-3510F	20"x 8'
20-3512F	20"x 32"
24-3510F	24"x 8'
24-3512F	24"x 4'
30-3510F	30"x 8'
30-3512F	30"x 4'
36-3510F	36"x 8'
36-3512F	36"x 4'
48-3510F	48"x 6'

AIRTITE SEALANT	
ITEM#	QUANTITY
20-0711	1

## FLANGED PRODUCT SHEET

90° (45°) ELBOW	
ITEM#	SIZE
06-2530	6"
08-2530	8"
10-2530	10"
12-2530	12"
14-2530	14"
16-2530	16"
18-2530	18"
20-3530F	20"
24-3530F	24"
30-3530F	30"
36-3530F	36"
48-3530F	48"

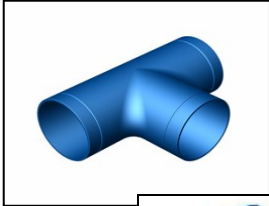


SPECIAL ANGLE ELBOWS	
ITEM#	SIZE
06-2531	6" 11 1/4°
06-2535	6" 15°
08-2531	8" 11 1/4°
08-2535	8" 15°
10-2531	10" 11 1/4°
10-2535	10" 15°
12-2531	12" 11 1/4°
12-2535	12" 15°
14-2531	14" 11 1/4°
14-2535	14" 15°
16-2531	16" 11 1/4°
16-2535	16" 15°
18-2531	18" 11 1/4°
18-2535	18" 15°
20-3531F	20" 11 1/4°
20-3533F	20" 30°
20-3534F	20" 45°
20-3537F	20" 7 1/2°
24-3531F	24" 11 1/4°
24-3533F	24" 30°
24-3534F	24" 45°
24-3537F	24" 7 1/2°
30-3531F	30" 11 1/4°
30-3533F	30" 30°
30-3534F	30" 45°
30-3537F	30" 7 1/2°
36-3531F	36" 11 1/4°
36-3533F	36" 30°
36-3534F	36" 45°
36-3537F	36" 7 1/2°
48-3532F	48" 22.5°
48-3534F	48" 45°

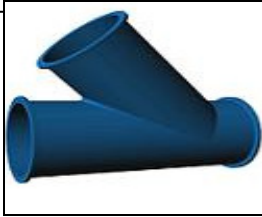
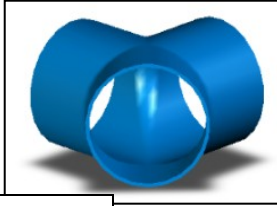
# THE BLUE DUCT™

## FLANGED PRODUCT SHEET

6" - 12"



Style 14" & 16" only

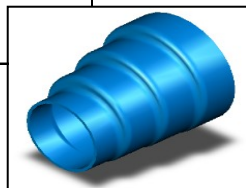
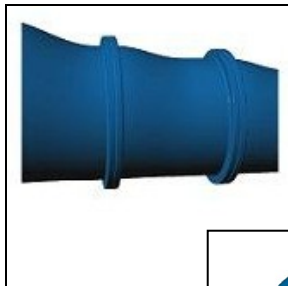
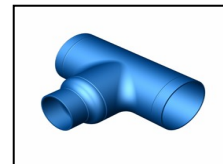


Style 20" - 48"

TEE/WYE*		
ITEM#	TEE/WYE	SIZE
06-2520	Tee	6"
08-2520	Tee	8"
10-2520	Tee	10"
12-2520	Tee	12"
14-2575	Wye	14"
16-2575	Wye	16"
20-3575F	Wye	20"
24-3575F	Wye	24"
30-3575F	Wye	30"
36-3575F	Wye	36"

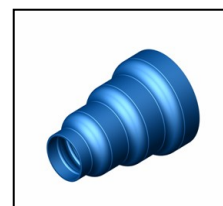
\*Custom tee's available upon request

TEE REDUCER	
ITEM#	SIZE
08-2525	8" - 8" x 6"

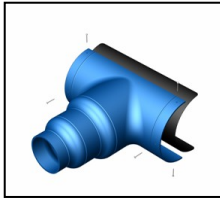


ECCENTRIC REDUCER	
ITEM#	SIZE
18-2540	18" x 16" x 14" x 12"
20-3541F	20" x 18"
20-3542F	20" x 18" x 16"
24-3541F	24" x 20"
24-3542F	24" x 20" x 18"
24-3543F	24" x 20" x 18" x 16"
30-3542F	30" x 24"
36-3541F	36" x 30"
36-3543F	36" x 30" x 24"
48-3543F	48" x 42" x 36"

CONCENTRIC REDUCER	
ITEM#	SIZE
08-2540	8" x 6"
10-2540	10" x 8"
12-2547	12" x 10" x 8" x 6"
16-2547	16" x 14" x 12" x 10"



## FLANGED PRODUCT SHEET



SADDLE REDUCER		
ITEM#	SIZE	FITS ON PIPE
10-2578	8" x 6"	10", 12", 14", 16", 18"
12-2577	10" x 8"	12", 14", 16", 18"
14-2577	14" x 12"	14", 16", 18"
16-2577	16" x 14"	16", 18"
18-2577	18" x 16"	18"

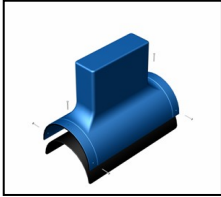
SADDLE REDUCER FOR 20" & 24" PIPE		
ITEM#	SIZE	FITS ON PIPE
10-2477	8" x 6"	20", 24"
12-2477	10" x 8"	20", 24"
14-2477	14" x 12"	20", 24"
16-2477	16" x 14"	20", 24"
18-2477	18" x 16"	20", 24"

SADDLE REDUCER FOR 30" & 36" PIPE		
ITEM#	SIZE	FITS ON PIPE
06-2677	6"	30", 36"
08-2677	8"	30", 36"
10-2677	10"	30", 36"
12-2677	12"	30", 36"

\* Item # 20-0029 hardware needed with these items

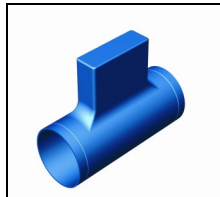
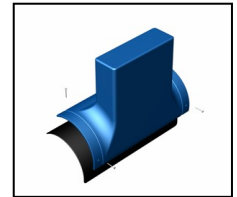
SPOOL PIPE REDUCER ASSEMBLIES		
ITEM#	SIZE	FITS ON PIPE
16-3077	16" x 14"	30"
18-3077	18" x 16"	30"
16-3677	16" x 14"	36"
18-3677	18" x 16"	36"

## FLANGED PRODUCT SHEET



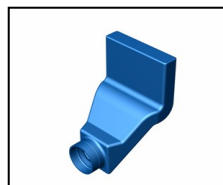
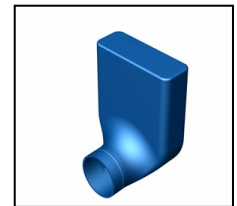
CENTER SADDLE BOOT			
ITEM#	SIZE	BOOT SIZE	FITS ON PIPE
06-2570	6"	4" x 12"	6"
08-2570	8"	4" x 12"	8"
10-2570	10"	4" x 12"	10", 12", 14", 16", 18"

OFFSET SADDLE BOOT			
ITEM#	SIZE	BOOT SIZE	FITS ON PIPE
10-2550	10"	4" x 12"	10"
12-2550	12"	4" x 12"	12", 14", 16", 18"
12-2551	12"	4" x 24"	12", 14", 16", 18"



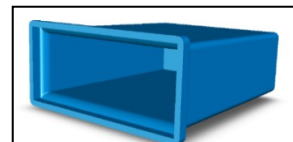
10" INLINE BOOT		
ITEM#	SIZE	BOOT SIZE
10-2515	10"	4" x 12"

90° BOOT		
ITEM#	SIZE	BOOT SIZE
06-2502	6"	4" x 12"
08-2502	8"	4" x 12"
08-2503	8 3/4" x 8" Round	



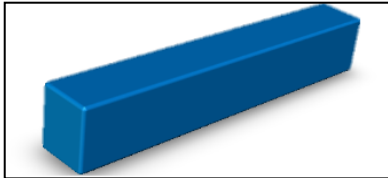
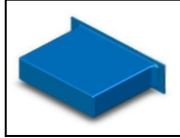
6" OFFSET FOOTER BOOT		
ITEM#	SIZE	BOOT SIZE
06-2501	6"	3" x 14"

16" BOOT EXTENSION	
ITEM#	SIZE
20-0050	4" x 12" x 16"



# THE BLUE DUCT™

## FLANGED PRODUCT SHEET

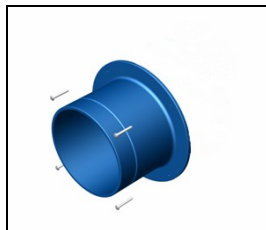


LINEAR DIFFUSER ADAPTOR & BOXES			
ITEM#	SIZE	O.D.	REGISTER SIZE
20-0060 (LDA)	23" x 20" x 6"	Fits on 24", 36", 48"	
20-0063	24"	25" x 7" x 8"	24" x 6"
20-0062	36"	37" x 7" x 8"	36" x 6"
20-0061*	48"	49" x 7" x 8"	48" x 6"
20-0064*	48"	49" x 9" x 11"	48" x 8"
20-0065*	48"	49" x 11" x 9"	48" x 10"

\* Two LDA's fit on a 48"

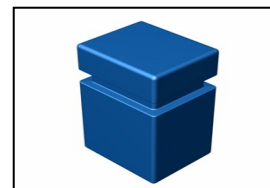
UNIVERSAL BOOT STYLE DIFFUSER ADAPTER & BOXES		
ITEM#	SIZE	REGISTER SIZE
20-0059	90° boot universal reducer adaptor	10" x 8"
20-0414	14"	14" x 4"
20-0416	16"	16" x 4"
20-0418	18"	18" x 4"
20-0424	24"	24" x 4"
20-0614*	14"	14" x 6" OR 14" x 8"
20-0616*	16"	16" x 6" OR 16" x 8"
20-0618*	18"	18" x 6" OR 18" x 8"

\* Size dependant on mounting configuration



PLENUM ADAPTOR with SCREWS	
ITEM#	SIZE
06-2560	6"
08-2560	8"
10-2560	10"
12-2560	12"
14-2560	14"
16-2560	16"
18-2560	18"

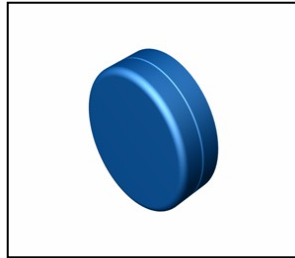
PLENUM*	
ITEM#	SIZE
20-0010	20" x 24" x 36"
20-0015	25" x 30" x 48"



\* Custom plenum boxes available upon request (longer lead times)

# THE BLUE DUCT™

## FLANGED PRODUCT SHEET



### DAMPER FOR 4" x 12" BOOTS

ITEM#	QUANTITY
20-0030	10/box

### BOOT REDUCER 4" x 12" to 2 -1/4" x 12"

ITEM#	QUANTITY
20-0200	10/box

### END CAPS

ITEM#	SIZE
06-2511	6"
08-2511	8"
10-2511	10"
12-2511	12"
14-2511	14"
16-2511	16"
18-2511	18"
20-2511F	20"
24-2511F	24"
20-3511F	20" Pipe with (1) end left on
24-3511F	24" Pipe with (1) end left on
30-3511F	30" Pipe with (1) end left on
36-3511F	36" Pipe with (1) end left on

### DAMPER ASSEMBLIES

ITEM#	DESCRIPTION	QUANTITY
06-0071	(1) 06-2560 + 6" Damper	1
08-0071	(1) 08-2560 + 8" Damper	1
10-0071	(1) 10-2560 + 10" Damper	1
12-0071	(1) 12-2560 + 12" Damper	1
14-0071	(1) 14-2560 + 14" Damper	1

### AIR TEST KIT (manometer, fill kit w/ valve, screws)

ITEM#	SIZE	FITS ON LD
20-0101	Fits all sizes	1 per box

\* Includes manometer, valve, adapter, 8" plate

### BAG OF BOLTS FOR FLANGED CONNECTIONS

ITEM#	SIZE	FITS ON LD
20-0024	3"x 5/16 SS	Box of 5

\* 12 bolts per bag all sizes

## FLANGED PRODUCT SHEET

SCREWS			
ITEM#	SIZE	WIDTH	QUANTITY (PER BAG)
20-0025	1 1/4" SS saddle screws		25
20-0026	2 1/4" Plenum adapter screws	14", 16", 18"	25
20-0029	2" Bolts and screws for saddle reducers	Used with 30", 36" saddle reducers	6 Bolts, 4 Screws

CLAMP & GASKET SET			
ITEM#	SIZE	WIDTH	QUANTITY (PER BOX)
06-0080	6"	5"	10
08-0080	8"	5"	10
10-0080	10"	5"	10
12-0081	12"	6"	10
14-0081	14"	6"	5
16-0081	16"	6"	5
18-0081	18"	6"	5
20-0081	20"	6"	1
24-0081	24"	6"	1
30-0081	30"	6"	1
36-0081	36"	6"	1
48-0081	48"	6"	1

GASKET ONLY			
ITEM#	SIZE	WIDTH	QUANTITY (PER BOX)
06-0090	6"	5"	5
08-0090	8"	5"	5
10-0090	10"	5"	5
12-0090	12"	6"	5
14-0090	14"	6"	5
16-0090	16"	6"	5
18-0090	18"	6"	5
20-0090	20"	6"	1
24-0090	24"	6"	1
30-0090	30"	6"	1
36-0090	36"	6"	1



## FLANGED PRODUCT SHEET

FOAM TRENCH BLOCK		
ITEM#	SIZE	QUANTITY
20-0027	3" x 4" x 12"	36/box
20-0028	5" x 4" x 18"	36/box

\* 18" Blocks for Flanged Product 20" - 48"

BLUE DUCT FLANGED ALIGNMENT PINS	
ITEM#	QUANTITY
20-0151	4/box

DRILLING JIG	
ITEM#	SIZE
20-0131	20"
24-0132	24"
30-0133	30"
36-0134	36"
48-0136	48"

FLANGE CUTTER & SAW	
ITEM#	SIZE
20-0141	8 1/4" Circular saw w/cutting jig

ALIGNMENT RATCHET STRAPS	
ITEM#	PIPE SIZE
20-0152	20", 24"
20-0153	30", 36"
20-0154	42", 48"

\* Used to align flanged pipe and fittings

Tools are highly recommended for installation of 20"- 48" duct.  
 Full credit is issued for tools once returned to AQC Warehouse in good working condition.  
 Tools can also be purchased for use on future projects.